

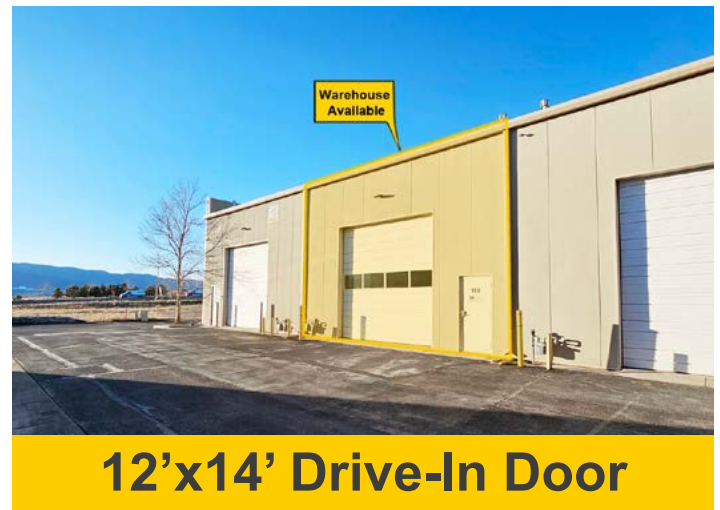
# North Colorado Springs Warehouse Unit for Lease

11641 Ridgeline Dr, Unit 160-A, Colorado Springs, CO 80921



## PROPERTY OVERVIEW

Now available and a rare opportunity to lease a small warehouse/ garage unit located just off of Voyage Pkwy and a short distance from InterQuest and I-25. The property is situated within the newly developed Voyager Business Park and is surrounded/ nearby a vast number of retail/restaurants, office and residential. The Unit would work well for a wide variety of light industrial, distribution, storage, or other warehouse/ garage uses.



## PROPERTY FEATURES

- Rare clean warehouse/ garage unit
- Features a 12'x14' door
- High clearance ceiling and high stacking limit
- Floor drain within Warehouse
- Fantastic north Colorado Springs location

## PROPERTY DETAILS

<b>Unit Size:</b>	Unit 160-A +/- 1,232 SF
<b>Zoning:</b>	PIP-1, CU
<b>Year Built:</b>	2008
<b>Celling Height:</b>	+/- 22 Ft, with approx. 18 Ft stacking height
<b>Protection:</b>	Sprinkled Fire Suppression
<b>Lease Rate:</b>	\$2,200 per month

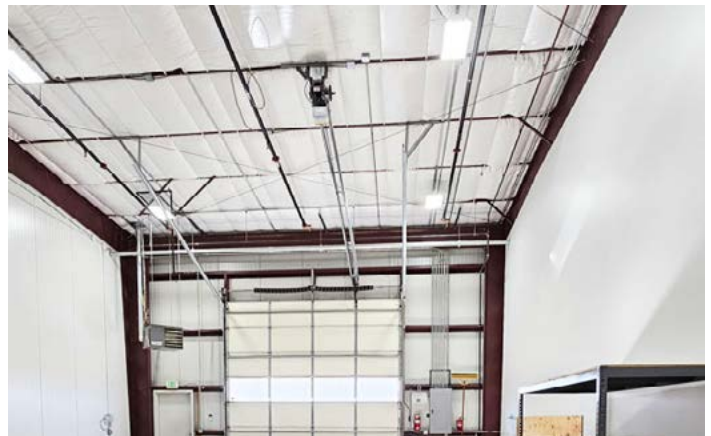
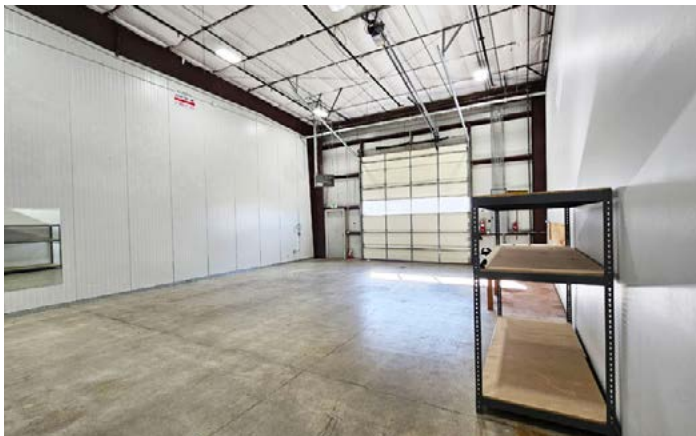
### **Taylor Stamp**

Managing Broker  
719.235.8099

tstamp@quantumcommercial.com

# North Colorado Springs Warehouse Unit for Lease

11641 Ridgeline Dr, Unit 160-A, Colorado Springs, CO 80921



104 S Cascade Avenue, Suite 201-A | Colorado Springs, CO 80903  
719.590.1717 main | 719.634.0404 fax | quantumcommercial.com



The information contained herein was obtained from sources believed to be reliable, however, Quantum Commercial Group Inc makes no guarantees, warranties, or representations as to the completeness or accuracy thereof. The presentation of this property is submitted subject to errors, changes of price or conditions prior to sale or lease, or withdrawal without notice.

# North Colorado Springs Warehouse Unit for Lease

11641 Ridgeline Dr, Unit 160-A, Colorado Springs, CO 80921

Floor Plan - Unit 160-A (+/- 1,232 SF)

